



# Great Lakes – St. Lawrence Shipping and COVID-19

**Conference of Great Lakes St. Lawrence Governors  
and Premiers**

August 2020





# Presentation Map

Today's goal: provide a system-wide overview of COVID-related maritime policies and practices

Sources of Guidance

Prevention and Protection

Reporting and Managing Cases

# Maritime Transportation is an Essential Service

Key supporting element of a \$6+ trillion regional economy and 237,868 jobs



Source: Great Lakes Seaway Partnership

# Key Sources of Guidance for GLSLS Shipping

Industry policies are in line with national health agency policies

Less Specific

## Worldwide Stakeholders

**World Health Organization**      **International Maritime Organization**  
Worldwide Industry Associations (ex: International Chamber of Shipping)

### Canada

Public Health Agency of Canada

Transport Canada

### United States

Centers for Disease Control and Prevention

US Coast Guard

## GLSLS Industry-tailored Guidance

**US and Canadian Industry Associations and Stakeholders**  
Lake Carriers, Chamber of Marine Commerce, etc...

More Specific

# Industry Guidance

GLSLS stakeholders supported information sharing among members, and tailored general advice to their respective industries



## ➤ Information and Resource Sharing

- Policy updates/guidance for members
- Peer exchange: sharing best practices
- Cooperative PPE purchases
- Trust-building work



## ➤ Development of Guidance

- Response planning for members
- Policy feedback for agencies



# Presentation Map

Sources of Guidance

Prevention and Protection

Reporting and Managing Cases

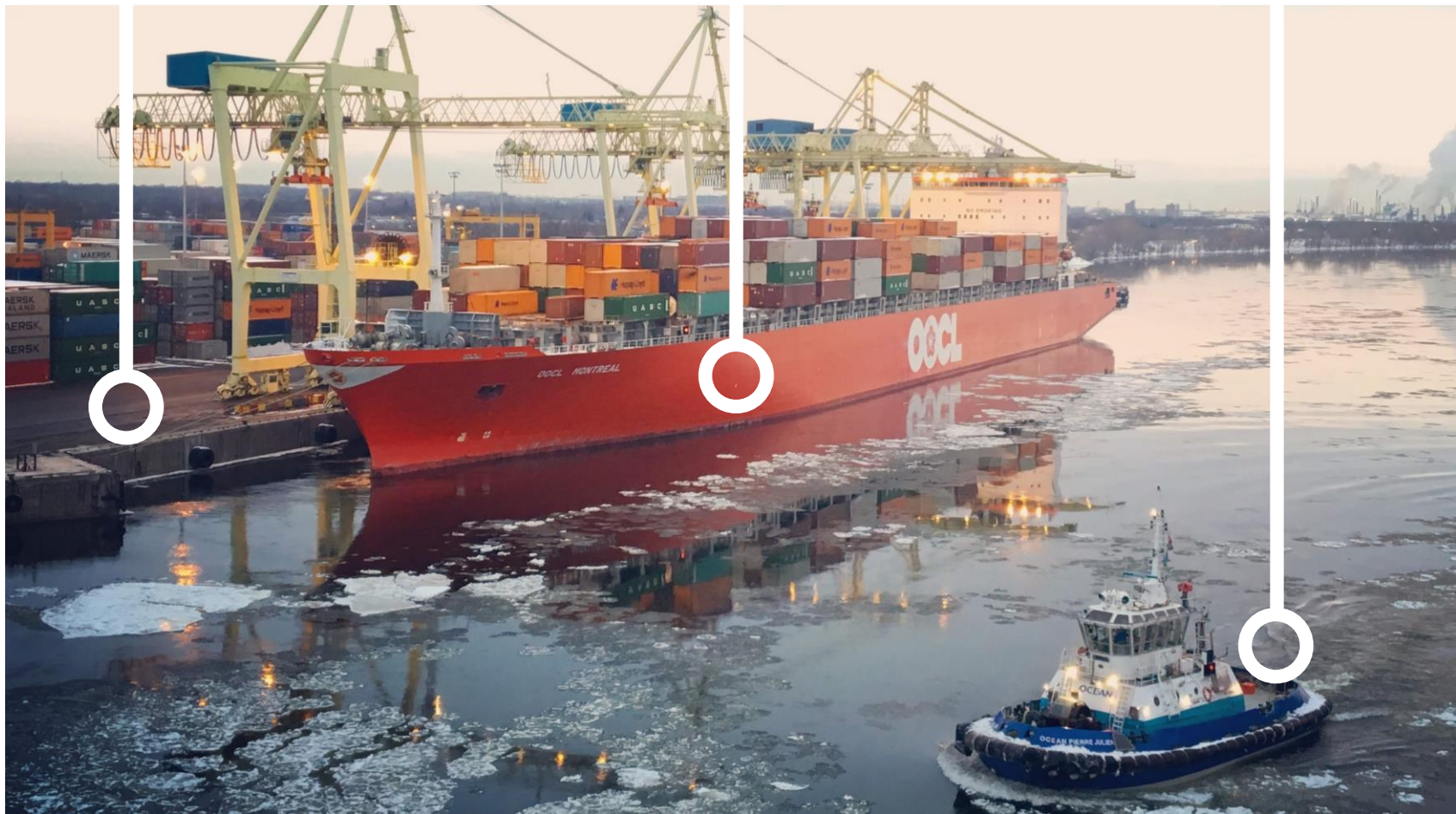
# Implementation of Guidance

Three key areas for implementation in maritime operations:

Shore-side

Vessel-side

In-Between



Source: Port of Montreal

# Generalized Precautions

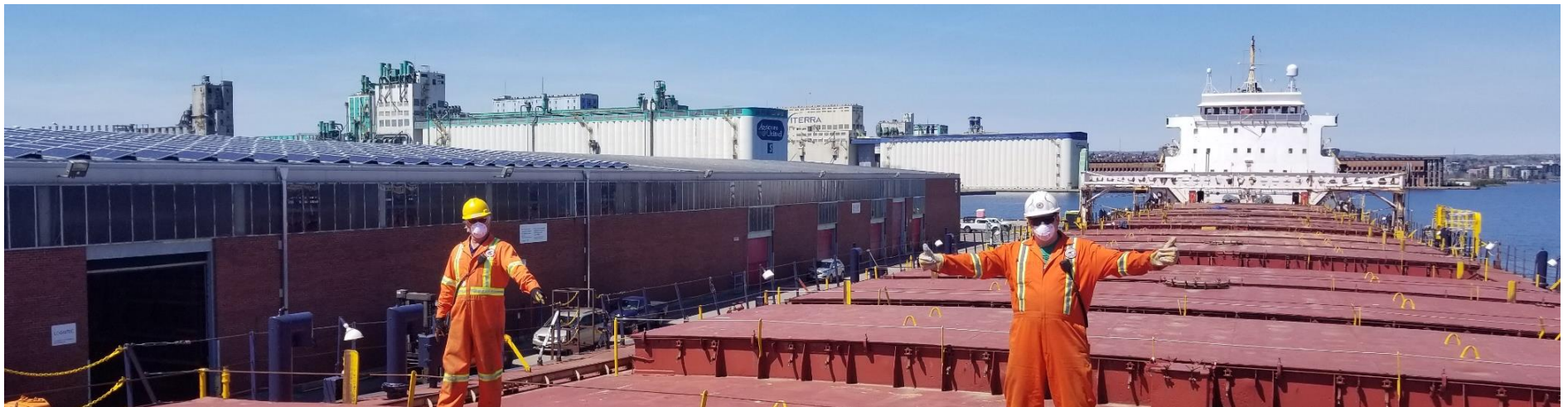
Many policies and practices closely mirror guidance for the general public:

## Similar to All Public Guidance:

- Personal hygiene precautions: cover coughs, hand washing, etc...
- Social distancing requirements
- Mask requirements
- Cleaning common areas

## More-Unique Items:

- Staggered staff shifts, avoid groups
- Cleaning of shared equipment



Source: Algoma Central



# Precautions Aboard Vessels

Vessels present a unique challenge, measures are focused on limiting interaction with “outside” staff

## Examples of Precautions:



➤ Structuring crew changes to reduce possible exposure or introduction



➤ Prohibiting non-essential shore leave



➤ Performing some inspections dockside instead on onboard



➤ Ensuring that staff coming aboard vessels, such as pilots, mechanics, or inspectors have been screened for COVID and observe social distancing, mask use, and other hygiene protocols



➤ Cleaning or sanitizing common areas after outside staff are aboard

# The Importance of Trust

Trust building between vessel crews and shore-based staff (pilots, inspectors, etc) has been an important effort for some industry members

➤ Problem: concern between crews, pilots

➤ Solutions:

- Clear communication
- Certification to shared standards

*“...they [GLSLS stakeholders] needed to understand that they were looking out for each other...”*



Source: Chamber of Marine Commerce



# Presentation Map

Sources of Guidance

Prevention and Protection

Reporting and Managing Cases

# Case Detection and Reporting

Reporting cases for shore-side staff follows general public health guidance, but reporting for potential cases aboard vessels varies based on voyage types

Shore-based cases are straightforward: report to local health authority, and follow guidance

Cases on vessels:

- Domestic vessels generally report to state/provincial/local health authorities at next port of call
- Vessels arriving from overseas must report to national transportation or health agencies

Jurisdiction	Voyage Type	Case Reporting Guidance
Canada	Entering from International Waters	<ul style="list-style-type: none"><li>▪ If a case is detected before arrival at a Canadian port, report to TC and PHAC. PHAC provides follow-up directions.</li><li>▪ If the case is detected after arrival in Canada, inform TC and local health authorities at the port of call for further directions.</li></ul>
	Domestic	<ul style="list-style-type: none"><li>▪ Notify TC and inform provincial and local health authorities at the next port of call.</li></ul>
United States	Entering from International Waters	<ul style="list-style-type: none"><li>▪ Report to USCG. USCG will coordinate with CDC, who coordinates with local health authorities.</li></ul>
	Domestic	<ul style="list-style-type: none"><li>▪ Inform state health authorities at the next port of call.</li></ul>

# Responding to Cases

Associations serving domestic vessel operators have developed internal response plans and other response materials for their members

## Plan efforts include:



➤ Protocols for isolating and caring for crew members while vessels are in transit



➤ Locating berths or anchorages where affected vessels and crews can be diverted and quarantined



➤ Securing necessary supporting services for affected or quarantined vessel crews, including hotel services, specialty cleaning services, and catering services



➤ Identifying transportation services to return potentially-ill crew members to their homes

# Conclusion: Looking Toward the Future

- Policies and practices are settled and well-understood
- No noteworthy gaps or differences in policies or protections between US and Canada
- Uncertain when policies and protections will be relaxed, some may be continued in future
- Global issue for operations: repatriation of foreign seafarers





# Thank You:

This review was supported by information and feedback from agencies, industry associations, and ports:

## **Agencies and Associations**

- American Great Lakes Ports Association
- Association of Canadian Port Authorities
- Chamber of Marine Commerce
- Lake Carriers Association
- Laurentian Pilotage Authority
- Shipping Federation of Canada
- St. Lawrence Seaway Development Corporation
- Transport Canada
- United States Coast Guard

## **Port Authorities**

- Cleveland-Cuyahoga Port Authority
- Duluth-Seaway Port Authority
- Montreal Port Authority
- Port Milwaukee
- Port of Quebec
- Ports of Indiana – Burns Harbor



# Questions / Further Information

In addition to the government agency pages listed in the Shipping and COVID report, the following websites are good sources for aggregated information and updates on maritime-related COVID information:

- [Shipping Federation of Canada COVID-19 Resource Centre](#) (Canada and United States)
- [Chamber of Marine Commerce COVID Resource Centre](#) (Canada and United States)
- [MARAD Coronavirus Guidance](#) (United States)
- [International Chamber of Shipping Coronavirus Resources](#) (International)

**Contact:**

Eric Oberhart

CPCS Transcom Inc.

[eoberhart@cpcstrans.com](mailto:eoberhart@cpcstrans.com)





## Advisors to infrastructure leaders.

**Visit us:** [cpcstrans.com](http://cpcstrans.com)

**Write us:** [hello@cpcs.ca](mailto:hello@cpcs.ca)

**Sign up:** [cpcs.ca/newsletter](http://cpcs.ca/newsletter)

**LinkedIn:** [linkedin.com/company/cpcs/](https://www.linkedin.com/company/cpcs/)

1050 30th St NW

Washington, DC 20007

United States

979 Bank Street, Suite 200

Ottawa Ontario K1S 5K5

Canada

