

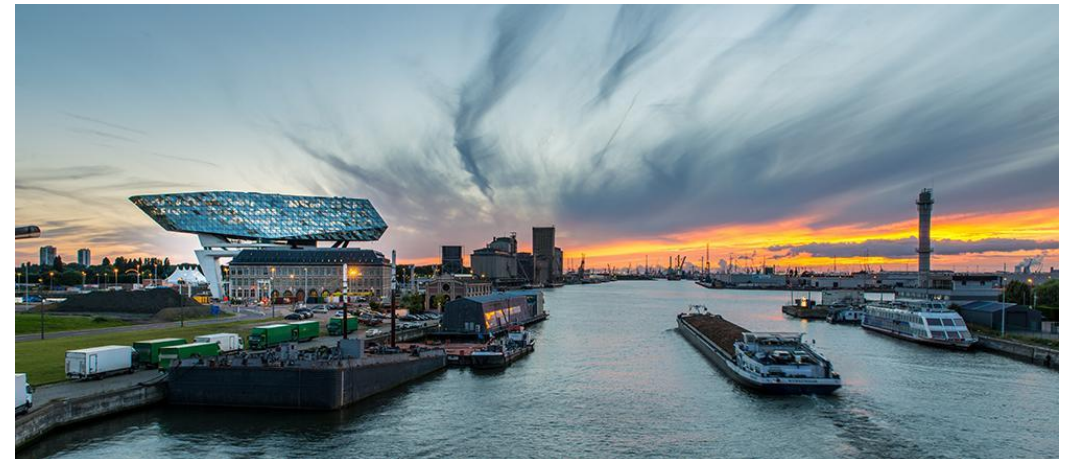
GREAT LAKES
ST. LAWRENCE
GOVERNORS
& PREMIERS

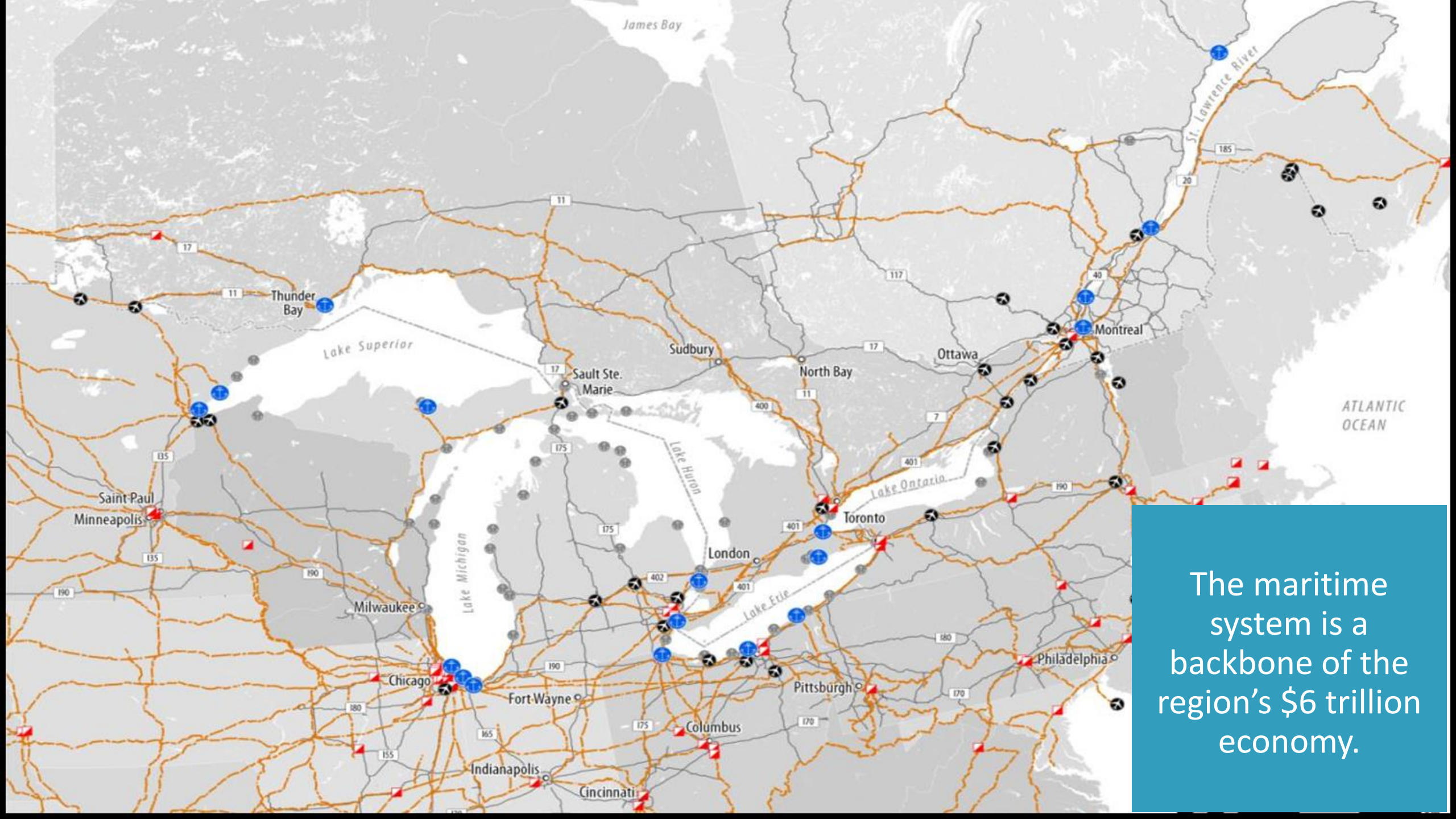


UNITED FOR GROWTH

Regional Maritime Initiative

**Building Trade Between
Western Europe and the
Great Lakes St. Lawrence Region**

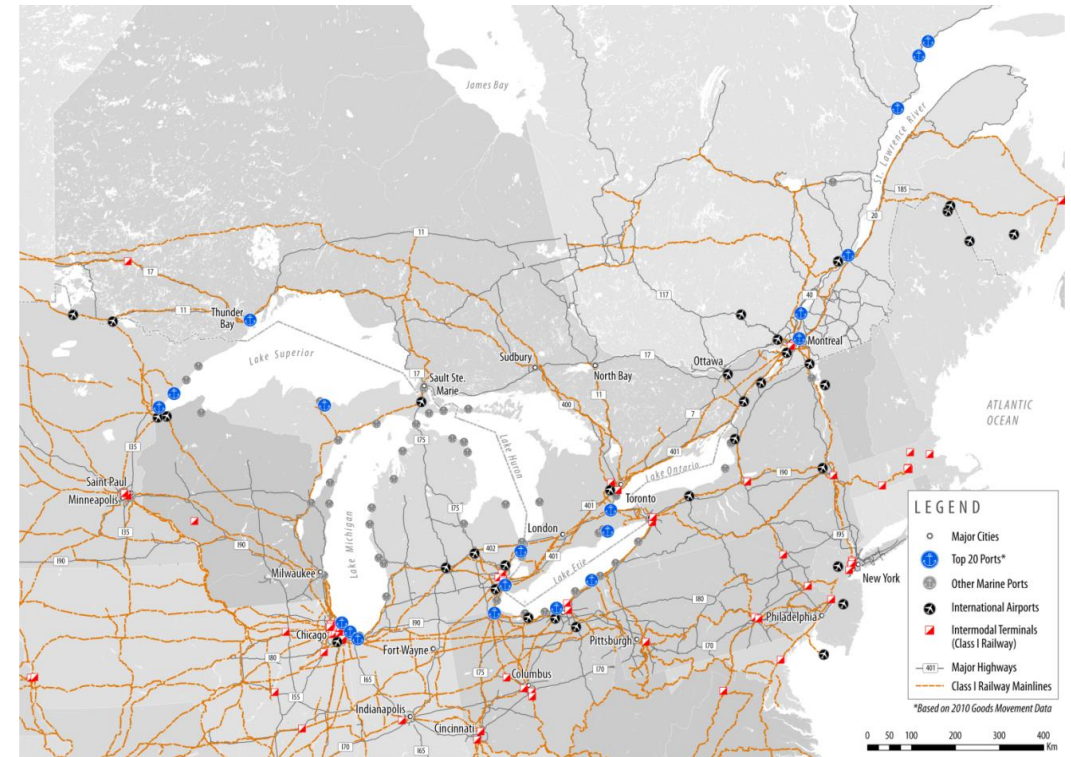




The maritime system is a backbone of the region's \$6 trillion economy.

Great Lakes St. Lawrence Maritime System

- World's largest inland waterway system
- More than 100 commercial ports
- A continuous waterway extending more than 3,800 kilometers
- Highly efficient and “green” mode of transport
- Essential to regional industry
- Generates US\$30 billion in annual business revenue



The GLSLS-Antwerp Trade Lane

Europe is the main overseas trading partner of GLSLS ports, and the Port of Antwerp is the gateway.

- A centralized location: Antwerp is located within 500 kilometers of 60% of Europe's purchasing power.
- Europe's top steel port by tonnage – steel is a key import for GLSLS ports.
- Connections to more than 1,300 locations globally.
- Beneficial logistics synergies, with logistics firms and end-user industries such as warehousing and petrochemical firms co-located on site.
- Forward-looking investments in digitization of the supply chain, autonomous vessels, and renewable energy.



The GLSLS-Antwerp Trade Lane

- The Great Lakes St. Lawrence region is the gateway to the heartland of North America for western Europe and goods arriving from the Port of Antwerp:
 - A megaregion with more than 100 million people.
 - Our region generates more than US\$6 trillion in GDP annually, and represents about 30% of total US/Canadian economic activity.
 - The region's Governors and Premiers have committed to a long-term collaboration with the Port of Antwerp to work toward shared goals.

